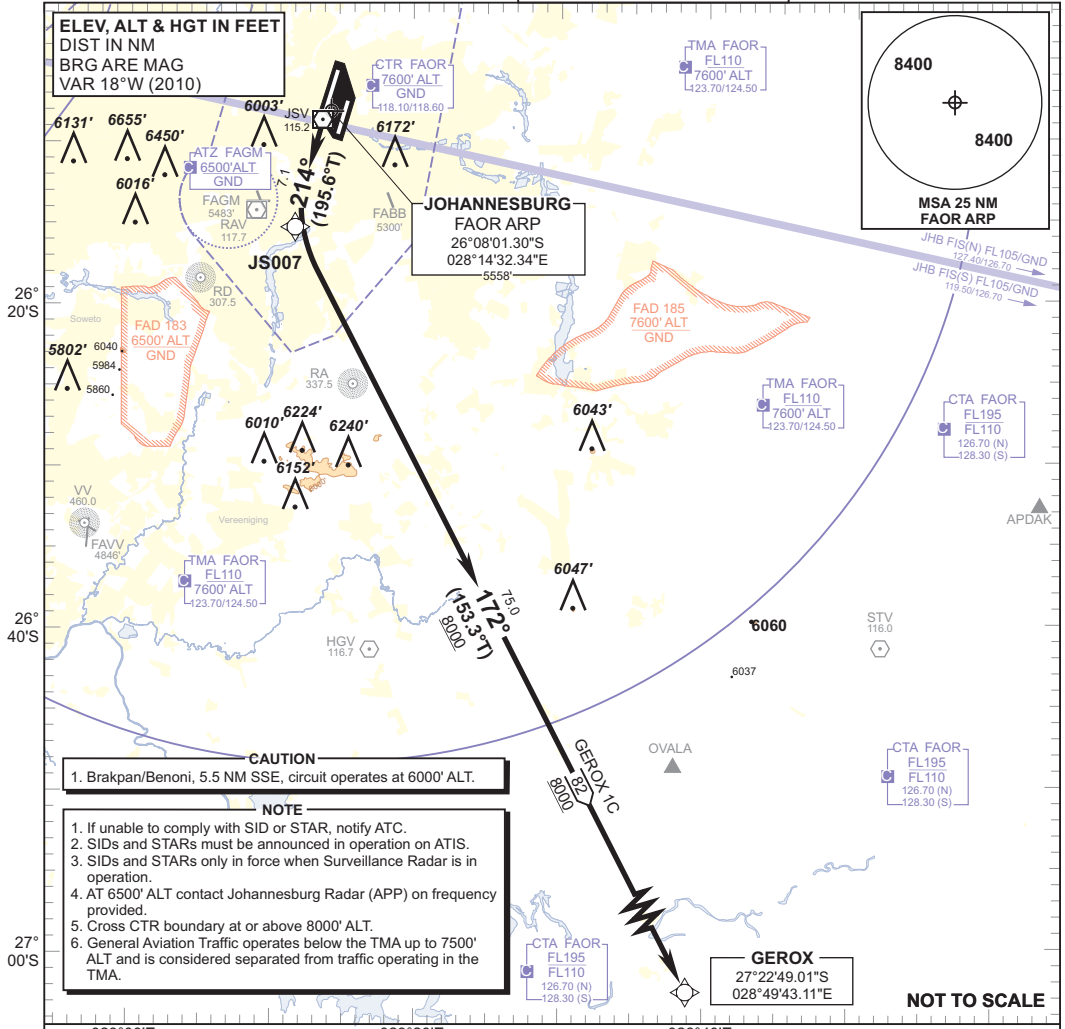


**STANDARD DEPARTURE
CHART -
INSTRUMENT
(SID)**

TRANSITION ALTITUDE
8000'
TRANSITION LEVEL
ATC

RADAR APP S 124.50 TWR E 118.60
E 124.50 W 118.10
W 123.70 ATIS 126.20
DIR 121.40 115.20
ACC N 126.70 SMC 121.90

JOHANNESBURG
(O.R. TAMBO INTERNATIONAL)
RNAV (GNSS) RWY 21R
GEROX 1C



CAUTION
1. Brakpan/Benoni, 5.5 NM SSE, circuit operates at 6000' ALT.

NOTE
1. If unable to comply with SID or STAR, notify ATC.
2. SIDs and STARs must be announced in operation on ATIS.
3. SIDs and STARs only in force when Surveillance Radar is in operation.
4. AT 6500' ALT contact Johannesburg Radar (APP) on frequency provided.
5. Cross CTR boundary at or above 8000' ALT.
6. General Aviation Traffic operates below the TMA up to 7500' ALT and is considered separated from traffic operating in the TMA.

**GEROX 1C,
RWY 21R**

Climb to 8000' ALT, maintain RWY track 214° to JS007. At JS007 turn left to GEROX. At GEROX set course as per flight plan.

Restricted to a minimum climb gradient of 4.2% to CTR boundary.
4.2% @ 140KT IAS = 595 FPM
4.2% @ 180KT IAS = 766 FPM
4.2% @ 220KT IAS = 936 FPM

COMMUNICATION FAILURE PROCEDURE (Squawk 7600)

Comply with GEROX 1C SID, climbing to 8400' ALT or maintain last assigned level, whichever is the highest. At GEROX set course as per flight plan and climb to flight plan level.

Aircraft wishing to return must continue to the SID termination point and climb to the last assigned level or MSA if cleared level is below MSA. At GEROX proceed to STV and enter the STV hold descending to FL240, if below FL240, hold at last assigned level for minimum 5 MIN. Comply with the STANDERTON 5B RWY 21L STAR Communication Failure Procedure.

CHANGE: NDB NIMT withdrawn